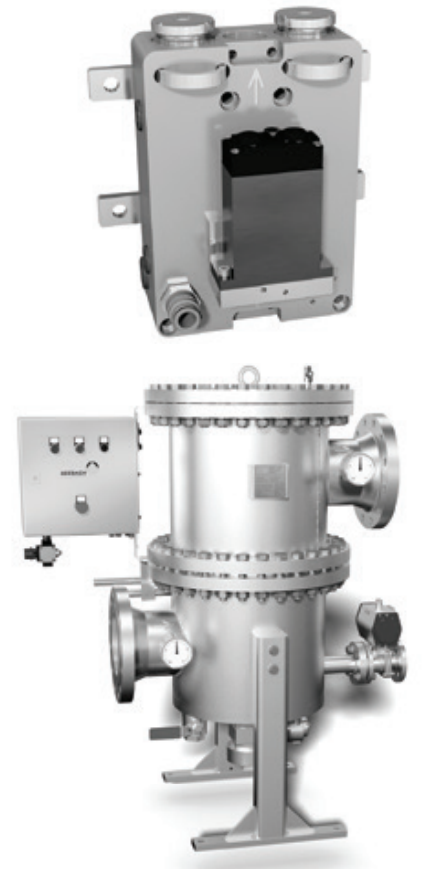




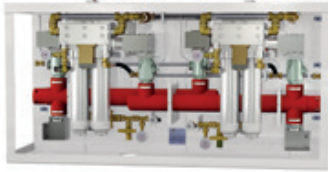
**Innovative Filtration Solutions**



# Filtration Solutions Mining



### Filter units



**ID - 3226**

Filter station with cartridge filters

Max. operating pressure 350 bar  
 Max. flow 1600 lpm  
 Input / Output DN50SS Steck-O  
 Backflush outlet DN19 Steck-O  
 Material stainless steel

Typical application High pressure filtration

### Filter units



**ID - 3232**

Filter station with cartridge filter

Max. operating pressure 350 bar  
 Max. flow 2400 lpm  
 Input / Output DN50SS Steck-O  
 Material stainless steel

Typical application High pressure filtration

### Filter units



**ID - 10380**

Single filter station with cartridge filter

Max. operating pressure 350 bar  
 Max. flow 800 lpm  
 Input / Output DN50SS Steck-O  
 Material stainless steel

Typical application High pressure filtration

### Backflush filter



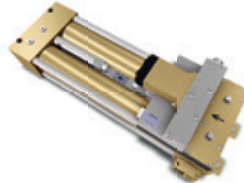
**ID - 1229**

Double filter - backflushable

Filter rating from 10 µm  
 Max. operating pressure 100 bar  
 Max. flow 250 lpm  
 Input / Output DN32 Steck-O  
 Backflush outlet DN25 Steck-O  
 Material brass

Typical application Water filtration  
 Emulsion/Cooling/Spray

### Backflush filter



**ID - 3122**

Double filter automatic backflushable

Filter rating from 10 µm  
 Max. operating pressure 100 bar  
 Max. flow 800 lpm  
 Input / Output G2  
 Material brass

Typical application Water filtration  
 Emulsion/Cooling/Spray

### Backflush filter



**ID - 3197**

Double filter - backflushable

Filter rating 25 - 100 µm  
 Max. operating pressure 350 bar  
 Max. flow 500 lpm  
 Input / Output G2  
 Material stainless steel

Typical application High pressure filtration

### Backflush filter



**ID - 10820**

Double filter - automatic backflushable

Filter rating from 25 µm  
 Max. operating pressure 350 bar  
 Max. flow 500 lpm  
 Input / Output DN25SS  
 Backflush outlet DN19  
 Material stainless steel

Typical application Roof support filtration

### Backflush filter



**ID - 11022**

Double filter - backflushable

Filter rating from 10 µm  
 Max. operating pressure 415 bar  
 Max. flow 250 lpm  
 Input / Output SAE 1½"  
 Backflush outlet DN19  
 Material stainless steel

Typical application High pressure filtration

### Backflush filter



**ID - 11101**

Double filter - backflushable

Filter rating from 25 µm  
 Max. operating pressure 420 bar  
 Max. flow 400 lpm  
 Input / Output DN25SS  
 Backflush outlet DN19  
 Material stainless steel

Typical application Roof support filtration

### Filter element



**ID - 1298**

Type filter cartridge  
 Execution unpleated  
 Filter medium wire mesh  
 Filter rating from 3 µm  
 Material stainless steel

Typical application In-line filter

### Filter element



**ID - 1448**

Type filter cartridge  
 Execution unpleated  
 Filter medium wire mesh  
 Filter rating from 3 µm  
 Material stainless steel

Typical application Valve filtration

### Filter element



**ID - 3197**

Type Filter element  
 Execution unpleated  
 Filter medium laminate  
 Filter rating from 25 µm  
 Material stainless steel

Typical application Water filtration/  
 High pressure filtration



### In-line filter



#### ID - 1174

#### In-line filter high pressure

Filter rating	from 3 µm
Max. operating pressure	max. 420 bar
Max. flow	600 lpm
Input / Output	several options
Material	stainless steel
Typical application	High pressure filtration

### In-line filter



#### ID - 1329

#### In-line filter

Filter rating	10 - 100 µm
Max. operating pressure	420 bar
Max. dP element	315 bar
Max. flow	45 lpm
Input / Output	DN10 Steck-O
Material	stainless steel
Typical application	Last chance filtration

### In-line filter



#### ID - 3077

#### In-line filter longlife

Filter rating	25 µm, 40 µm
Max. operating pressure	350 bar
Max. dP element	320 bar
Max. flow	200 lpm
Input / Output	DN20 Steck-O
Material	stainless steel
Typical application	Last chance filtration

### Backflush filter



#### ID - 3218

#### Automatic backflush filter

Filter rating	from 25 µm
Max. operating pressure	40 bar
Max. flow	1500 lpm
Input / Output	DN100
Backflush outlet	DN40
Material	stainless steel
No. of elements	6
Typical application	Water filtration Emulsion/Cooling/Spray

### Backflush filter



#### ID - 3219 / 18

#### 8" Automatic backflush filter

Filter rating	from 25 µm
Max. operating pressure	40 bar
Max. flow	6200 lpm
Input / Output	8" ASME 300
Backflush outlet	DN40 Steck-O
Material	stainless steel
No. of elements	18
Typical application	Water filtration Emulsion/Cooling/Spray

### Backflush filter



#### ID - 10152

#### Double filter - backflushable

Filter rating	25, 50 and 100 µm
Max. operating pressure	100 bar
Max. flow	800 lpm
Input / Output	G2
Backflush outlet	DN38 Steck-O
Material	stainless steel and brass
Typical application	Water filtration Emulsion/Cooling/Spray

### Return filtration



#### ID - 3086

#### Double filter returnline

Filter rating	3 µm - 25 µm
Max. operating pressure	10 bar
Max. flow	1600 lpm
Input / Output	G2/G3/DN80/DN100
Material	stainless steel
Typical application	Return filtration

### Return filtration

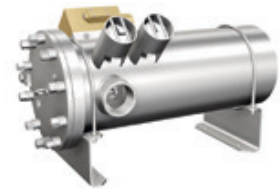


#### ID - 10020

#### Intank filter triple L

Filter rating	from 3 µm
Max. operating pressure	21 bar
Max. flow	2600 lpm
Input / Output	3"NPT
Bypass dP	5 bar
Material	stainless steel
Typical application	Intank filter

### Return filtration

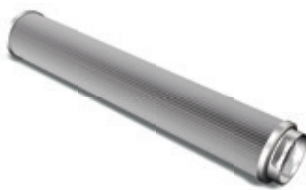


#### ID - 10250

#### Tank filter triple L short

Filter rating	from 3 µm
Max. operating pressure	41,5 bar
Max. dP element	5 bar
Max. flow	2600 lpm
Input / Output	3" NPT
Material	stainless steel
Typical application	Intank filter

### Filter element



#### ID - 3230

Type	Filter element
Execution	pleated
Filter medium	wire mesh / fleece
Filter rating	from 3 µm
Material	stainless steel / alu
Typical application	Return filtration

### Filter element



#### ID - 10004

Type	filter cartridge
Execution	unpleated
Filter medium	wire mesh
Filter rating	from 3 µm
Material	stainless steel
Typical application	Valve filtration

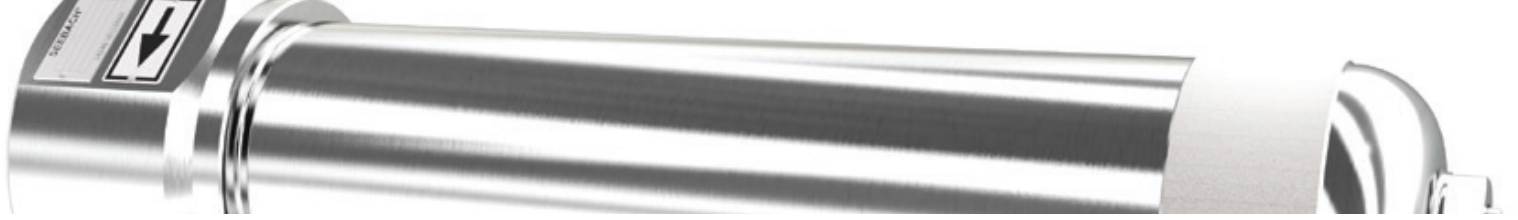
### Filter element



#### ID - 10103

Type	Filter element
Execution	glued
Filter medium	slotted tube
Filter rating	50 µm - 500 µm
Material	stainless steel
Typical application	Water filtration





### In-line filter



#### ID - 3083

##### In-line filter longlife

Filter rating	25 µm, 40 µm
Max. operating pressure	350 bar
Max. dP element	315 bar
Max. flow	300 lpm
Input / Output	DN 25 Steck-O
Material	stainless steel
Typical application	Last chance filtration

### In-line filter



#### ID - 10266

##### In-line filter

Filter rating	25 µm, 80 µm
Max. operating pressure	350 bar
Max. flow	200 lpm
Input / Output	DN20 Steck-O
Material	stainless steel
Typical application	Last chance filtration

### In-line filter



#### ID - 10771

##### In-line filter

Filter rating	from 25 µm
Max. operating pressure	350 bar
Max. flow	400 lpm
Input / Output	DN25 Steck-O
Material	stainless steel
Typical application	Last chance filtration

### Backflush filter



#### ID - 10252

##### Double filter - backflushable

Filter rating	25, 50 und 100 µm
Max. operating pressure	150 bar
Max. flow	300 lpm
Input / Output	G1/4
Backflush outlet	DN19 Steck-O
Material	stainless steel und brass
Typical application	Water filtration Emulsion/Cooling/Spray

### Backflush filter



#### ID - 10703

##### Double cartridge filter - automatic backflushable

Filter rating	25 - 100 µm
Max. operating pressure	350 bar
Max. flow	1000 lpm
Input / Output	G2
Backflush outlet	DN19 Steck-O
Material	stainless steel and brass
Typical application	High pressure filtration

### Backflush filter



#### ID - 10788

##### Double filter - automatic backflushable

Filter rating	25 µm
Max. operating pressure	350 bar
Max. flow	500 lpm
Input / Output	DN25 Steck-O
Backflush outlet	DN19 Steck-O
Material	stainless steel
Typical application	Roof support filtration

### Return filtration



#### ID - 10679

##### Double filter returnline

Filter rating	from 3 µm
Max. operating pressure	10 bar
Max. flow	1600 lpm
Input / Output	DN80
Material	stainless steel
Typical application	Return filtration

### Return filtration



#### ID - 10939

##### Double returnline station

Filter rating	from 3 µm
Max. operating pressure	6 bar
Max. flow	5400 lpm
Input / Output	DN150
Material	stainless steel
Typical application	Return filtration

### Return filtration



#### ID - 10986

##### Single bagfilter

Filter rating	from 3 µm
Max. operating pressure	16 bar
Max. flow	800 lpm
Input / Output	DN50
Material	stainless steel
Typical application	Return filtration

### Filter element



#### ID - 10252

Type	Filter element
Execution	unpleated
Filter medium	laminate
Filter rating	from 3 µm
Material	stainless steel
Typical application	Water filtration

### Filter element



#### ID - 10266

Type	Filter element
Execution	pleated
Filter medium	wire mesh
Filter rating	from 3 µm
Material	stainless steel
Typical application	In-line filter

### Filter element



#### ID - 10322

Type	Filter element
Execution	pleated
Filter medium	wire mesh
Filter rating	from 3 µm
Material	stainless steel
Typical application	In-line filter



Seebach GmbH

Your competent partner for innovative and reliable filtration solutions

Since 1970 leading in filtration technology.

Tailor made filtration solutions designed and manufactured in Germany.

Continuous process optimisation and innovation for challenging applications in plastic, pharmaceutical, chemical, food & beverage, aerospace, mining, oil and gas industries.

Seebach filtration solutions stand for effectiveness, flexibility, sustainability and reliability.

Highest production quality and operational reliability by optimisation of filtration solutions.

Seebach clients benefit from our fast and competent service worldwide.

**SEEBACH**<sup>®</sup> 



Innovative Filtration Solutions

## Seebach worldwide

### Headquarter

#### Seebach GmbH

Neckarweg 3 – 5  
34246 Vellmar / Germany  
www.seebach.com

Phone +49 561 982 97-0  
Fax +49 561 982 97-33  
info@seebach.com

### Europe

#### Seebach Nederland B.V.

BS Arnhem  
Phone +31 620 247 499  
nederland@seebach.com

#### Seebach GUS

Moscow  
Phone +7 495 502 3003  
russia@seebach.com

**IBS Beratung Handel GmbH**  
Turkey - Istanbul / Middle East  
Phone +90 216 384 60 35  
erkan.aztekin@ibs-beratung.com

**Tech- Trading Sp.z.o.o.**  
Poland - Chorzow  
Phone + 32 346 12 36  
biuro@tech-trading.pl

### North America

#### Seebach Filtration USA

Dunbar, WV  
Phone +1 304 720 37 46  
america@seebach.com

#### SWANSON Industries USA

Morgantown, WV Phone +1 304 284 5199  
Helper, UT Phone +1 435 472 3452  
Indiana, PA Phone +1 724 463 4435  
New Philadelphia, OH Phone +1 330 339 6656  
Rock Springs, WY Phone +1 307 382 9787  
info@swansonindustries.com

### Asia / Pacific

#### Seebach Filter Solutions India Pvt. Ltd.

Shirwal (Khandala, Satara)  
Phone +91 (2) 169 244 750  
india@seebach.com

#### Seebach Rep. Office Shanghai, China

Sales Manager Eric Shen  
Phone +86 177 1738 9656  
china@seebach.com

#### Longwall Hydraulics Pty. Ltd. Australia

Unanderra NSW  
Phone +61 2 4271 2999  
info@longwall.net



3000-FO-2016-EN-002

www.seebach.com